



# Downtown Waterfront

Update Meeting for  
Permitting and Final Engineering  
March 26<sup>th</sup>, 2024

**PINNACLE HILL  
ENGINEERING**

**LANDMARK CORPORATION**  
SURVEYORS & ENGINEERS

  
**RS LEONARD**  
Landscape Architecture

  
**THE  
MUSSON  
GROUP** Planning & Economic Development · Permitting · Project Management

# Agenda

- Update of recent activities
- The storms!
- Schedule
- Play structure options
- Design Refinements
- Paver Samples

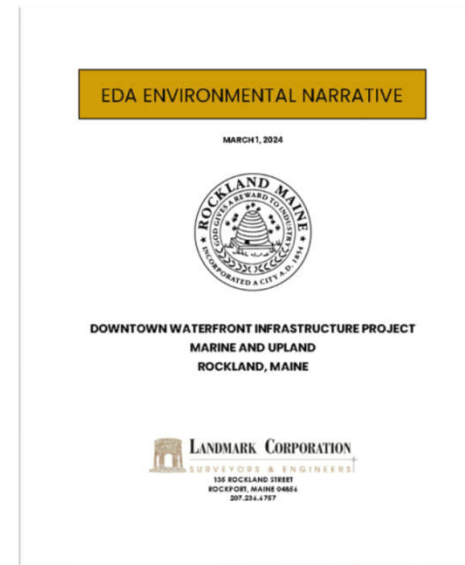
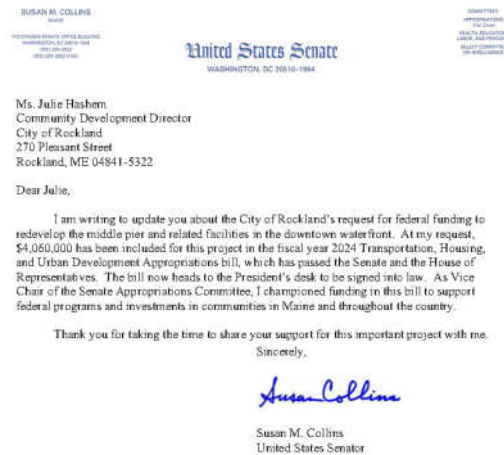
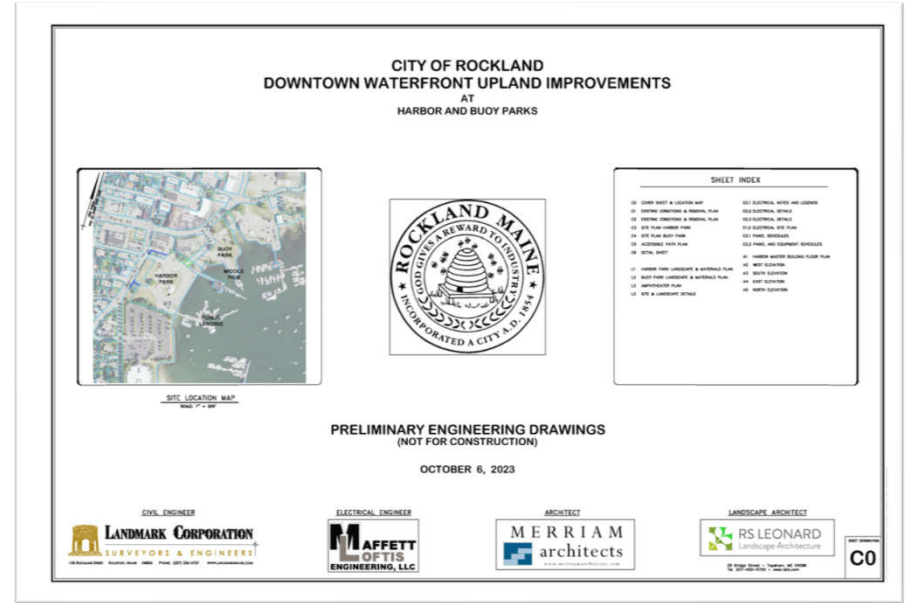




Update

# Since our last meeting....

- Finalized the Preliminary Engineering and Report of Upland Improvements, October 2023
- Prepared Environmental Narrative, March 2024
- Coordinated with abutters (Julie)
- Secured Federal Funding!!!! (Julie)
- Started permitting process with DEP and Army Corps
- Scheduled Geotech work for retaining wall at accessible path
- Developing a Design Guide
- Design Refinement





# Design Guide

Rockland Downtown Waterfront Project

March 2024



- Local fabrication of guardrails by Lyman Morse or similar company
  - Wood top rail for viewing / leaning
  - Tubular horizontal rails spaced to code requirements
  - Aluminum and/or stainless steel

## Rockland Downtown Waterfront

### Proposed Guardrails & Site Lighting



- Lighting for safety and nighttime year-round use of boardwalk / park
  - Pendant style site & boardwalk lighting
  - Marine-grade down lights (on guardrail posts, piers & boardwalk)
  - At-grade path lights (pier & boardwalk)





# The Storms!

# December 23, 2022

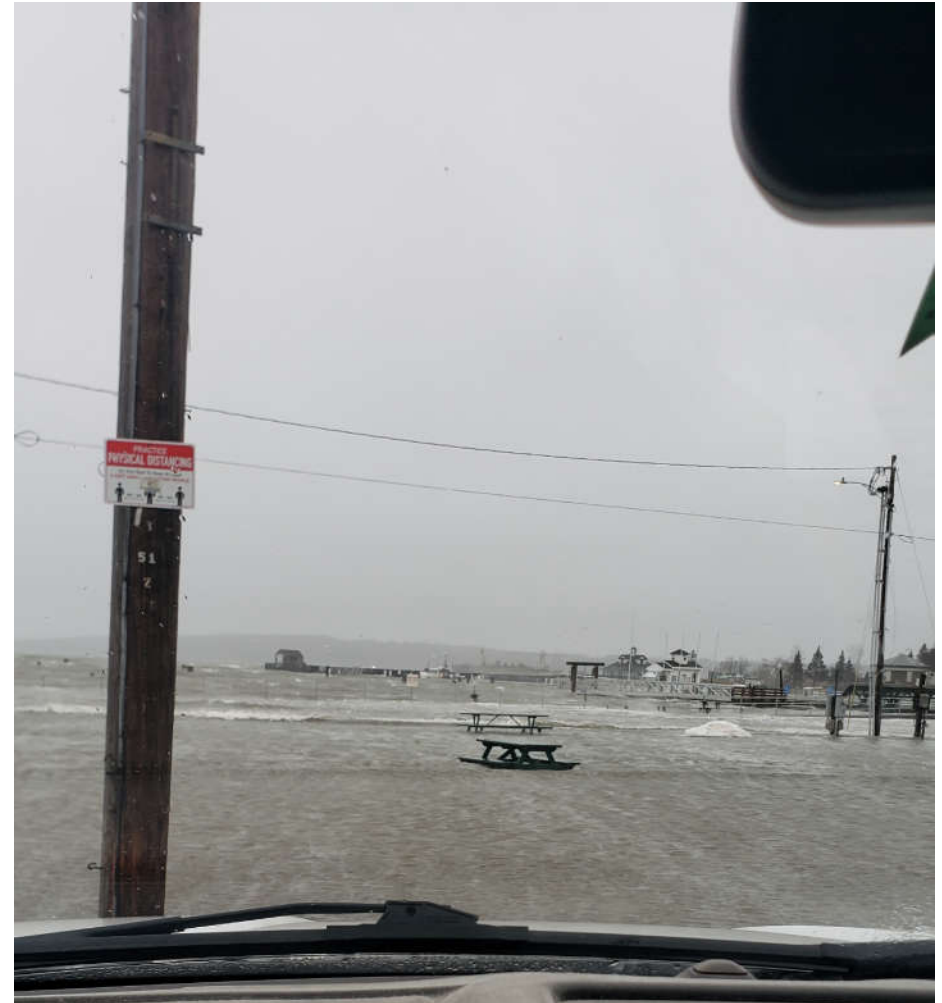
- 12.1 Tide
- 2' Storm Surge
- 2'-4' waves
- Waves up to 17'
- Existing seawall height 14.7-16.2



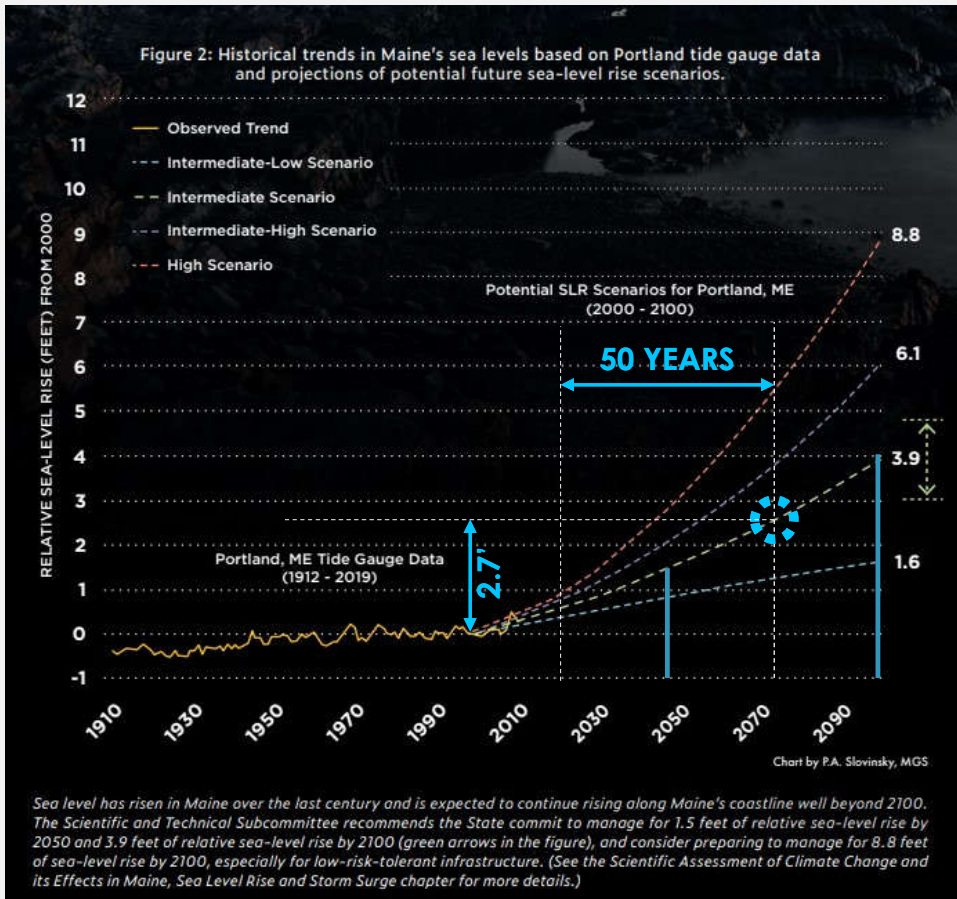


# January 10 and 13, 2024

- 11.1 and 12.1 Tide
- 3' Storm Surge
- 3'-4' waves
- Waves up to 18'
- Existing seawall height 14.7-16.2



# Projected Sea Level Rise



Source: [https://www.maine.gov/future/sites/maine.gov.future/files/inline-files/MaineWontWait\\_December2020](https://www.maine.gov/future/sites/maine.gov.future/files/inline-files/MaineWontWait_December2020)

## 50-Year Resiliency Planning:

- Plan waterfront infrastructure for projected sea level increase of **2.7'**

## From Maine Climate Council Update:

- DEP to consider **1.5'** by 2050 and **4'** by 2100

# Improve Resiliency

Proposed Harbor Master Bldg 19.7

Ex. Seawall 14.7-16.2 (15.7)

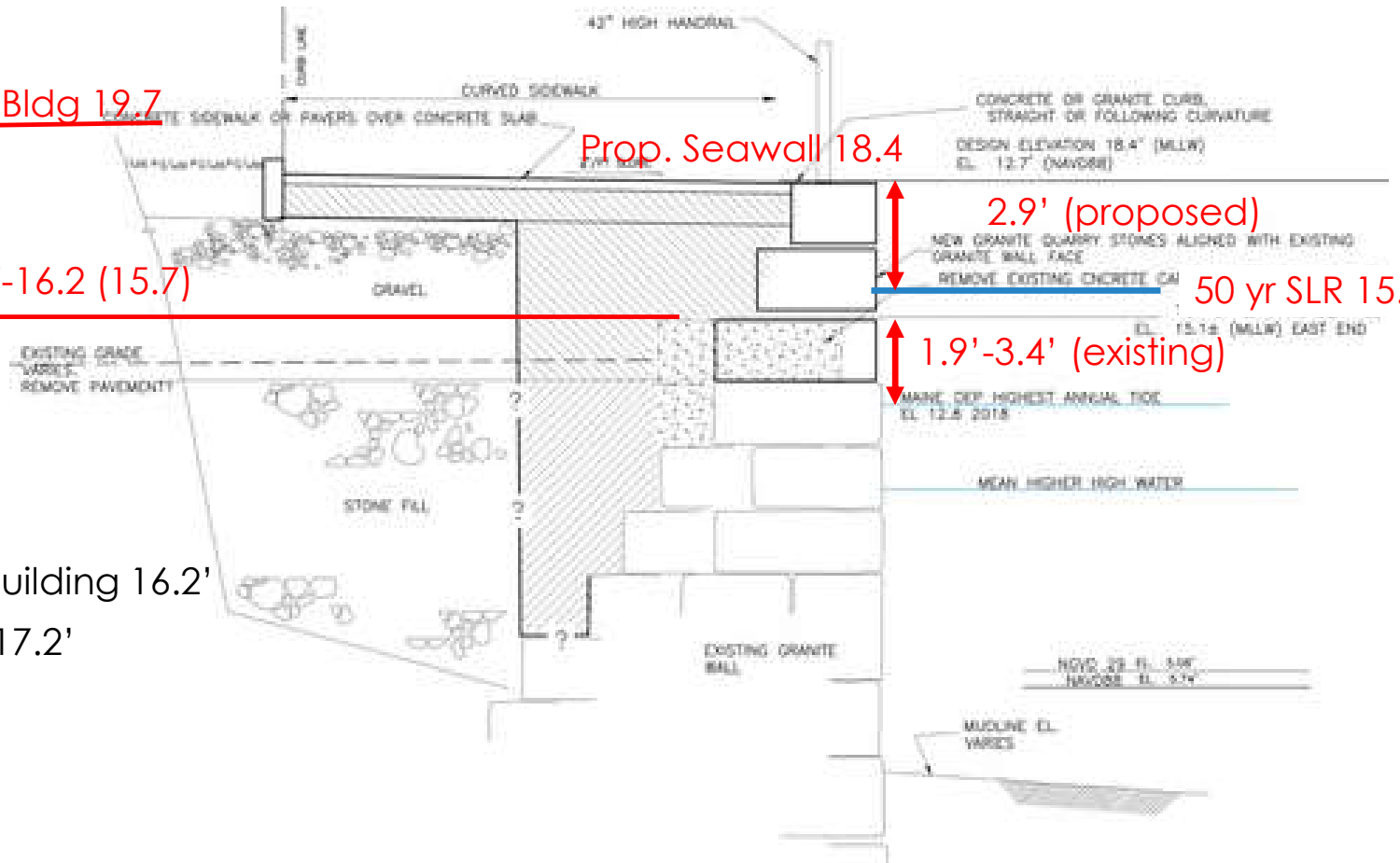
Prop. Seawall 18.4

2.9' (proposed)

50 yr SLR 15.5'

1.9'-3.4' (existing)

- Ex. Harbor Master Building 16.2'
- Ex. Public Landing 17.2'





# Schedule

Rockland Downtown Waterfront Schedule												
Tasks	2024				2025				2026			
	Spring	Summer	Fall	Winter	Spring	Summer	Fall	Winter	Spring	Summer	Fall	Winter
Submit Permit Application	★											
Permit Review			★									
Final Design					★		★					
Bidding												
Award												
Start Construction												

★ Committee Meeting

# Schedule



# Play Structures Design Refinement Pavers

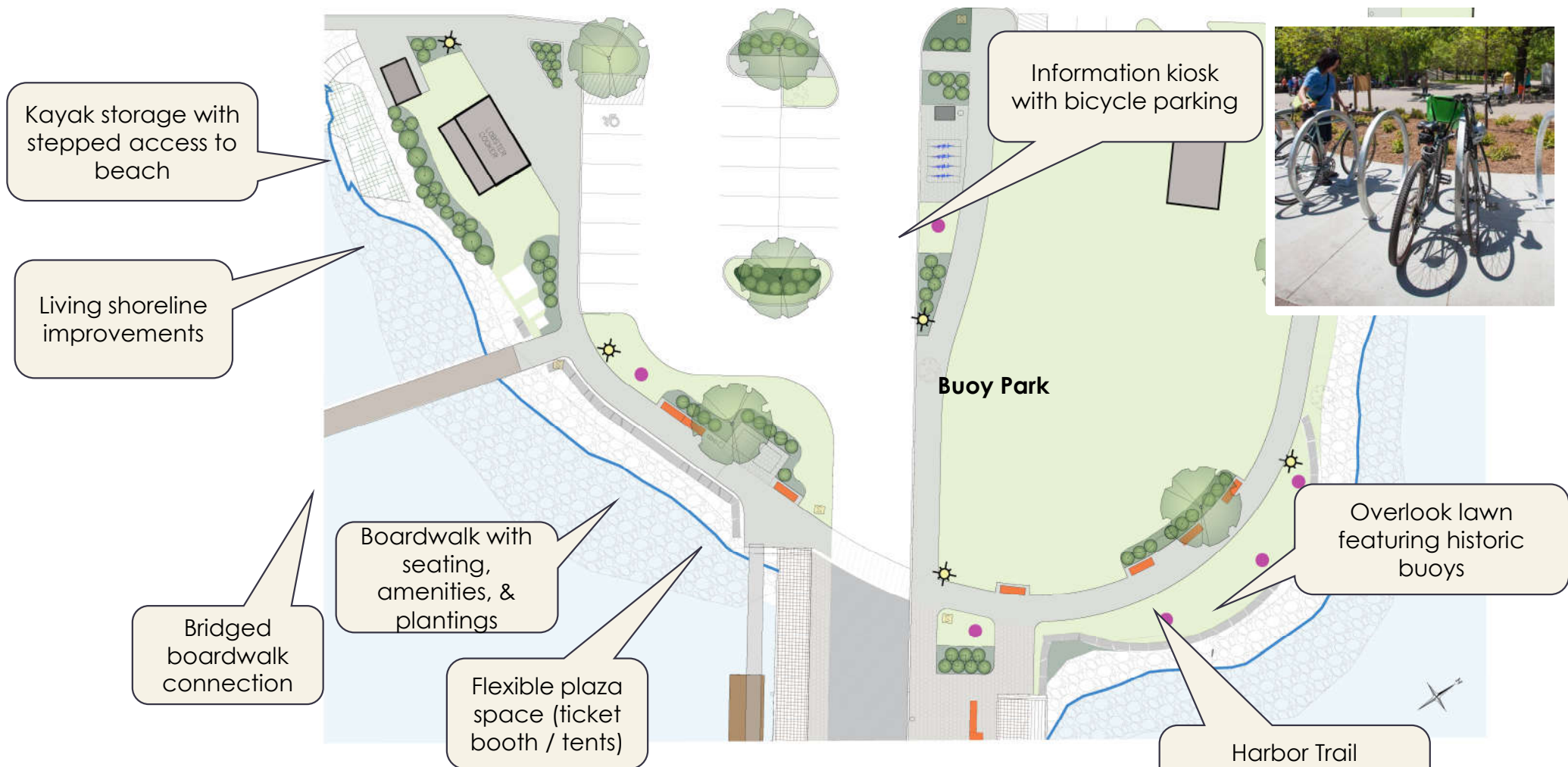
## Rockland Downtown Waterfront

Options for Functional Play Features



- Functional play features double as benches
- Multiple sizes and configurations to integrate on site
- Some may require surfacing to meet playground safety fall zone requirements





Kayak storage with stepped access to beach

Living shoreline improvements

Bridged boardwalk connection

Boardwalk with seating, amenities, & plantings

Flexible plaza space (ticket booth / tents)

Information kiosk with bicycle parking



Buoy Park

Overlook lawn featuring historic buoys

Harbor Trail Boardwalk with seating & plantings

# Buoy Park-Design Refinement

Downtown Waterfront Preliminary Plan





**Pavers**